

TECHNICAL DATA

ENCLOSURE :-  
EX-d AS PER IS/IEC 60079-1:2007

PROTECTION :-  
IP-66 AS PER IS 12063-1987 (IS/IEC 60529:2001)

AREA CLASSIFICATION :-  
ZONE -1 & 2

TEMPERATURE CLASS :-  
T6

GAS GROUPS :-  
IIA, IIB & IIC

MATERIAL OF CONSTRUCTION :-  
DIE CAST AL. ALLOY LM-6

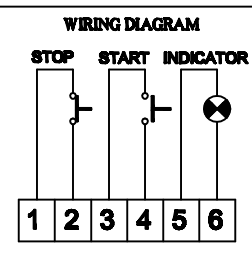
HARDWARE :-  
STEEL ZINC PLATED/STAINLESS STEEL

FINISH :-  
LIGHT GREY | YELLOW  
FOR IIA & IIB | FOR IIC

EARTHING :-  
1 NO. INSIDE & 2 NOS. OUTSIDE

CABLE ENTRY :-  
3/4"ET - 02NOS.

10.	INDICATING LAMP	1	A.R.
09.	WIRE BUSH	1	GLASSFEEL NYLONE
08.	TERMINAL	A.R.	CLIPON TYPE RAIL MOUNTED
07.	GASKET (ENDLESS, MOULDED)	2	NEOPRENE
06.	CONTACT ELEMENTS (1NO+1NC)	2	-
05.	ACTUATOR GREEN SHROUDED	1	P.P.
04.	ACTUATOR RED-MUSHROOM HEAD	1	P.P.
03.	TERMINAL BOX COVER	1	DIE CAST AL. ALLOY
02.	MAIN BODY COVER	1	CAST AL. ALLOY
01.	BODY	1	DIE CAST AL. ALLOY
NO.	DESCRIPTION	QTY	MAT./RATING



ISSUE	DATE	BY	MODIFICATION

CLIENT		DRAWN	MBP	01.09.16	DESCRIPTION:- FLP WP CONTROL STATION START-STOP PUSH BUTTON & INDICATING LAMP
CONSULTANT		CH'D	MBP		
P.O.No.		APP'D	MBP		
		1802/7, G.I.D.C. ESTATE, V.U.NAGAR 388121. (GUJARAT)		SHT.NO.	1 OF 1
				REV.	0
				DRG.NO.:-	B05